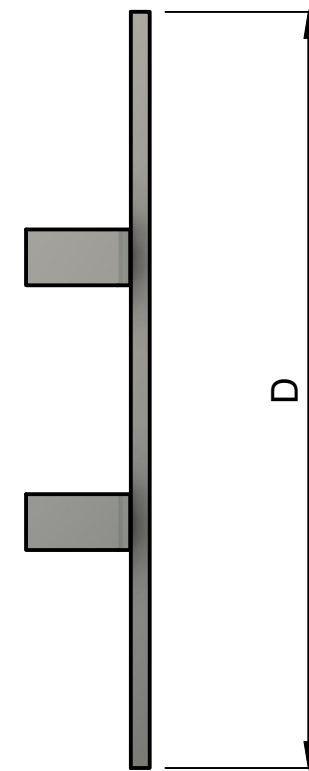
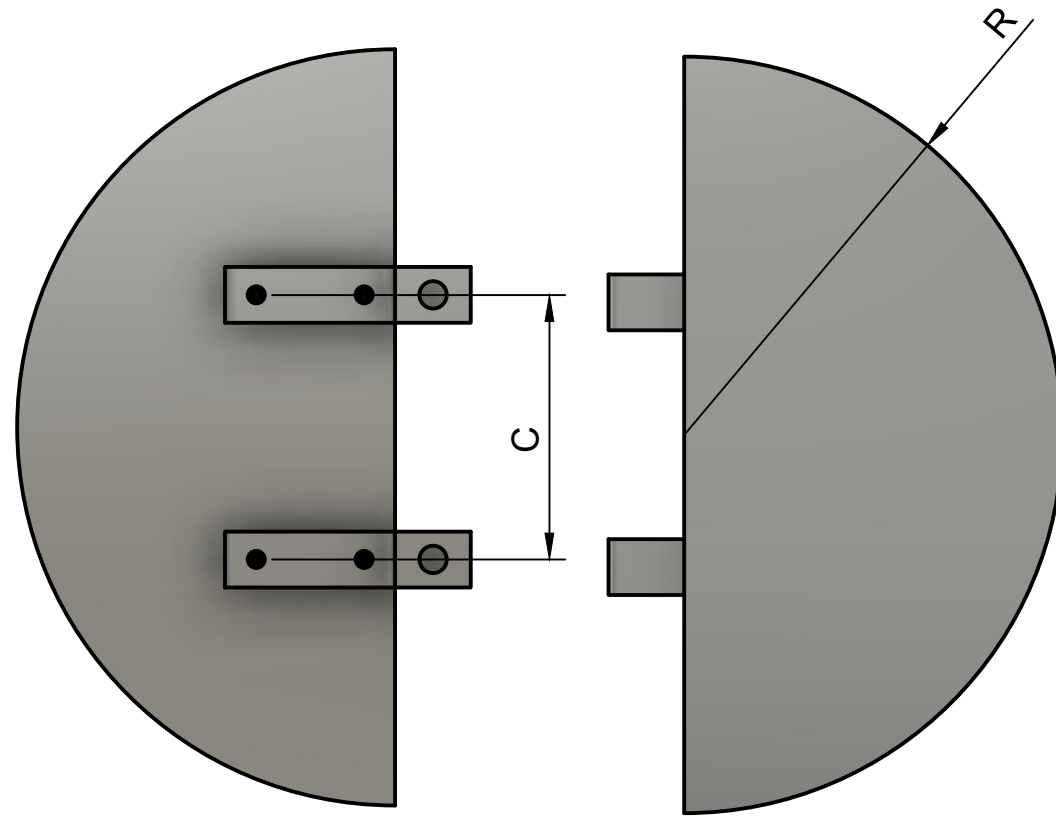
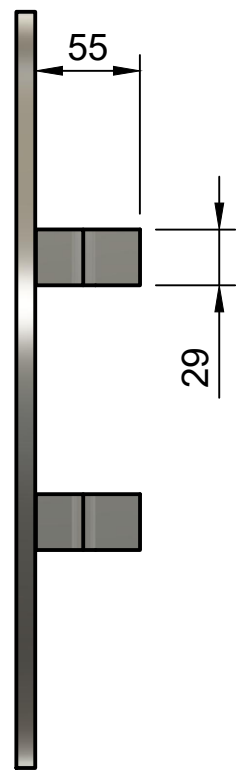

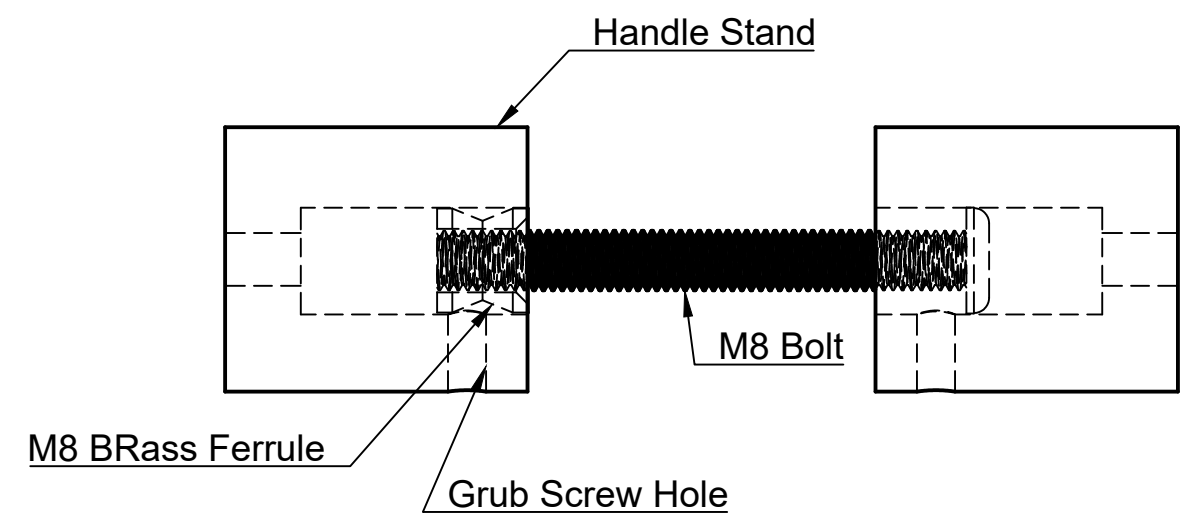
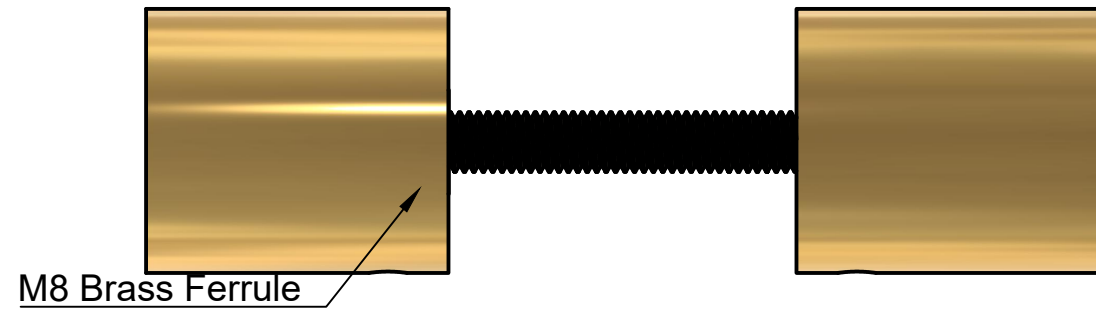


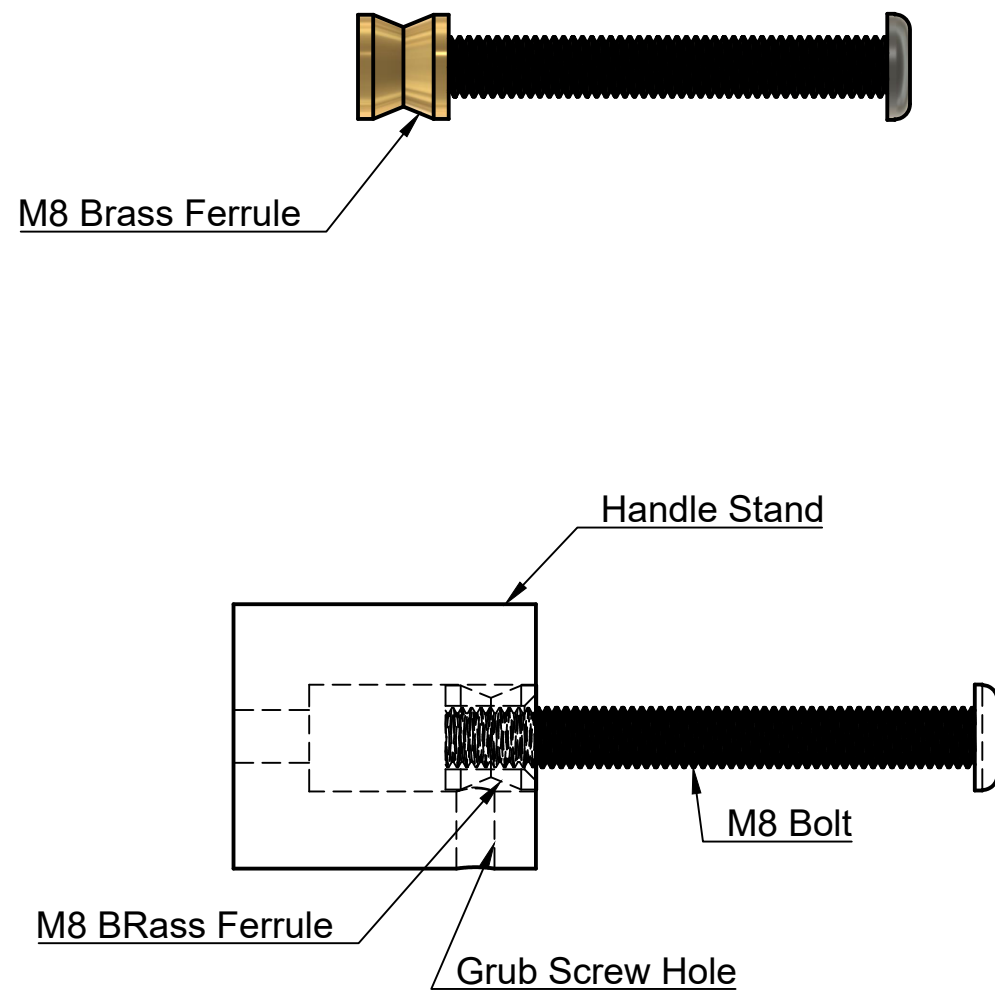
| T (Thickness) | D (Diameter) | R (Radius) | C (Fixing Centres) |
|---------------|--------------|------------|--------------------|
| 6 | 150 | 75 | 100 |
| 10 | 150 | 75 | 100 |
| 6 | 200 | 100 | 100 |
| 10 | 200 | 100 | 100 |
| 6 | 250 | 125 | 100 |
| 10 | 250 | 125 | 100 |
| 6 | 300 | 150 | 120 |
| 10 | 300 | 150 | 120 |
| 6 | 400 | 200 | 140 |
| 10 | 400 | 200 | |
| 6 | 500 | 250 | 200 |
| 10 | 500 | 250 | 200 |
| 6 | 600 | 300 | 250 |
| 10 | 600 | 300 | 250 |




| | |
|---|---|
|  | Drawing M02 Offset Entrance Handles |
| | Date 3/05/2023 |
| | Scale 1:2 |



| |
|---|
| Installation Instructions |
| IMPORTANT! Mark and drill door from both sides |
| Cut bolt to required length. Allow 30mm longer than door thickness. |
| Screw Brass Ferrules to each other through the door. |
| Slide Entrance Handle and Stand and over the Brass Ferrules. |
| Tighten Grub Screws. |



| |
|---|
| Installation Instructions |
| IMPORTANT! Mark and drill door from both sides |
| Cut bolt to required length. Allow 15mm longer than door thickness. |
| Screw Brass Ferrule from behind to door. |
| Slide Entrance Handle and Stand and over the Brass Ferrules. |
| Tighten Grub Screws. |

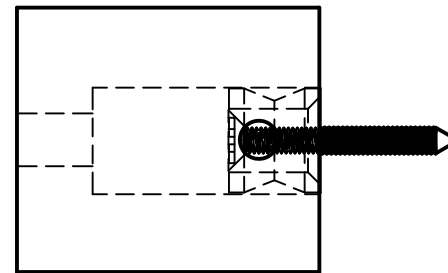
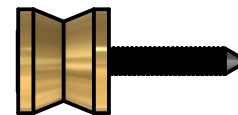
| | |
|---|---|
|  StyleFinishDoorware | Drawing Rear Fixing Method with Ferrules |
| | Date 4/05/2023 |
| | Scale 1:1 |

Installation Instructions

Screw Brass Ferrules to door.

Slide Entrance Handle and Stand and over the Brass Ferrules.

Tighten Grub Screws.



Drawing
Entrance Handle Surface Fixing with Ferrule

Date
4/05/2023

Scale
1:1